

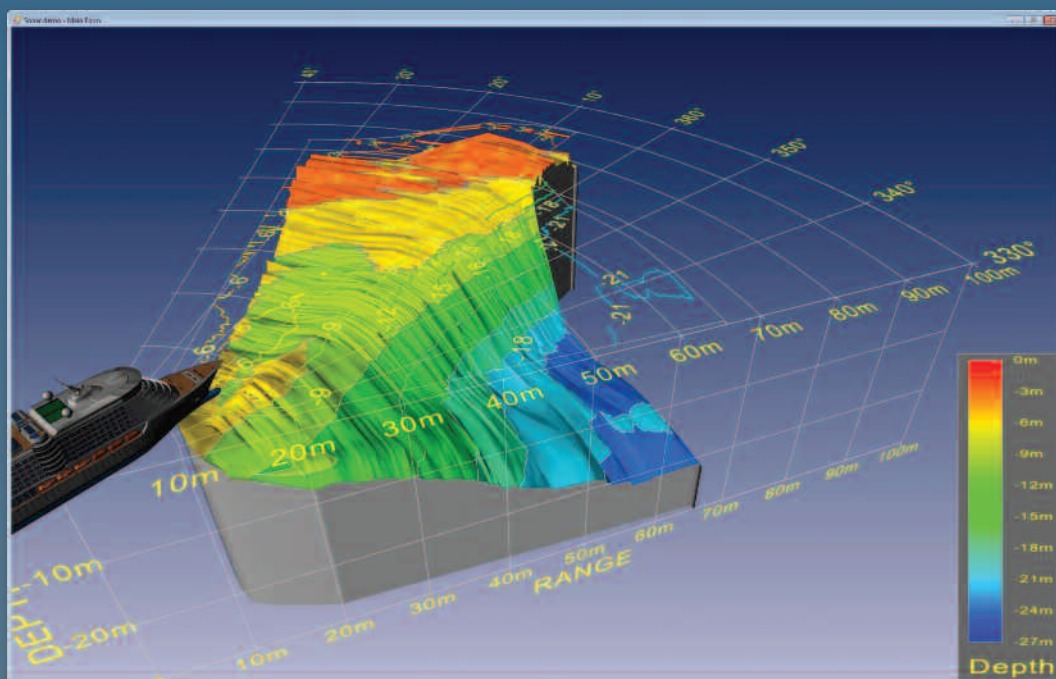
ECHOPiLOT™

3D FORWARD SONAR

EchoPilot 3 Dimensional Forward Sonar

This latest development of the well-proven, patented EchoPilot Forward Looking Sonar displays a 3 dimensional representation of the underwater scene ahead of the boat. The seabed terrain and potential hazards are shown, for the first time, with unparalleled realism. This is a real time sonar image of what is actually ahead of the boat not a chart rendered into 3D.

Twin Retractable Transducers ensure complete forward coverage whatever the hull form. The view ahead is 60 degrees in the horizontal plane, over 90 degrees in the vertical plane and the forward range is up to 200 metres. The screen updates every 1 to 2 seconds depending on the range setting. Available as a Black Box, the 3D FLS outputs include S and Composite Video, VGA and HDMI for a full colour picture on a wide range of compatible displays. It's possible that the 3D FLS has better underwater vision than a dolphin – for they are colour blind!



EchoPilot Marine Electronics Ltd

1 Endeavour Park, Crowe Arch Lane,
Ringwood, Hampshire BH24 1SF, England

T: +44 (0)1425 476211 E: info@echopilot.com

www.echopilot.com