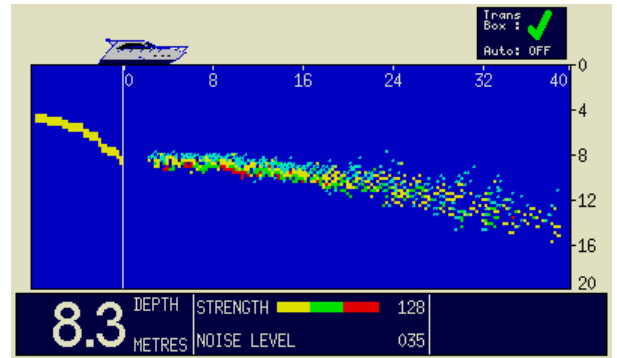
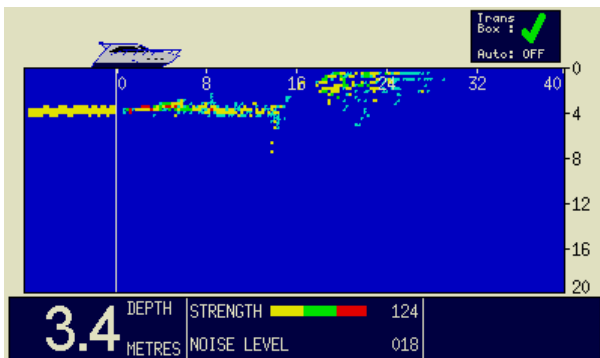


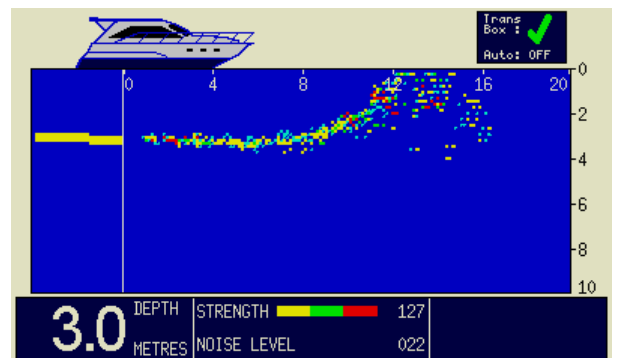
Approaching Black Rock.



Heading into deeper water.



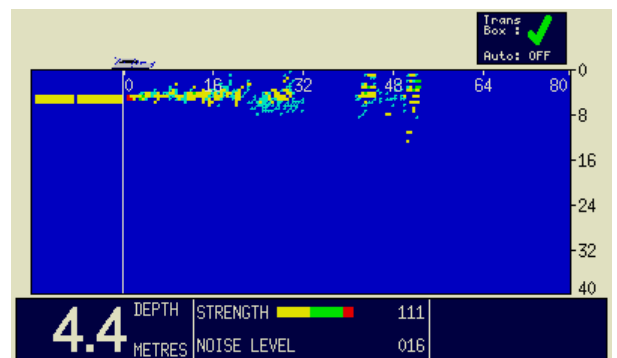
A mud bank is approaching - be careful!



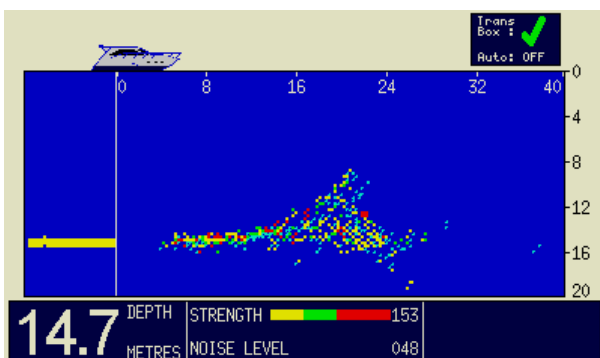
Now creeping slowly up to the mud bank



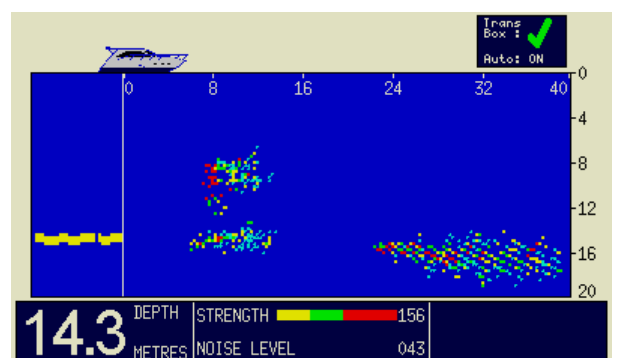
This quay wall can be seen at 80m.



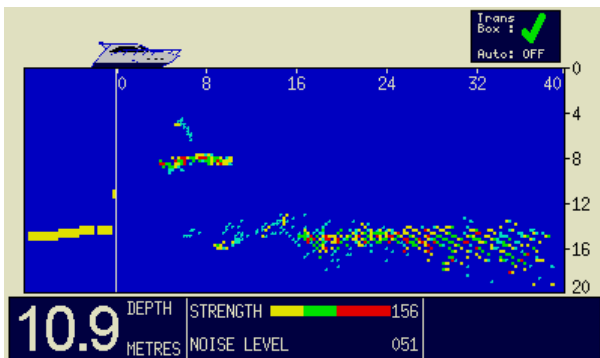
Quay wall getting closer - now at 50m.



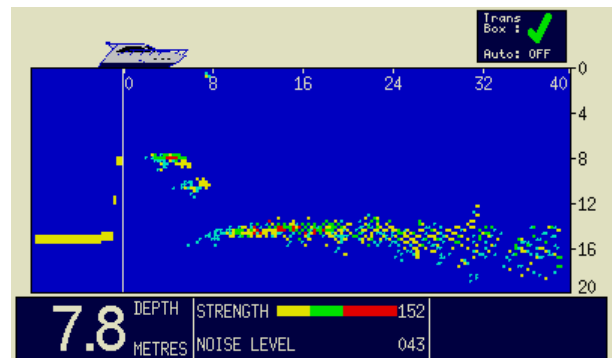
Passing over a 100ft sunken sand barge.



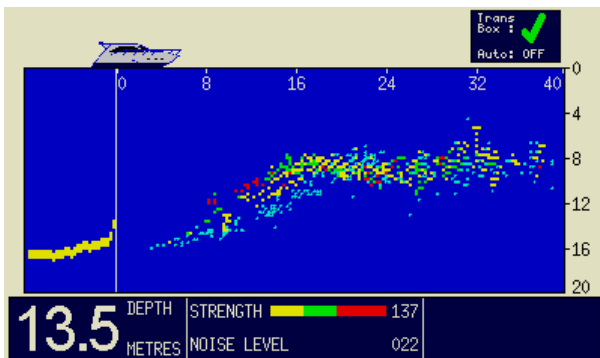
The sand barge now clearly in view.



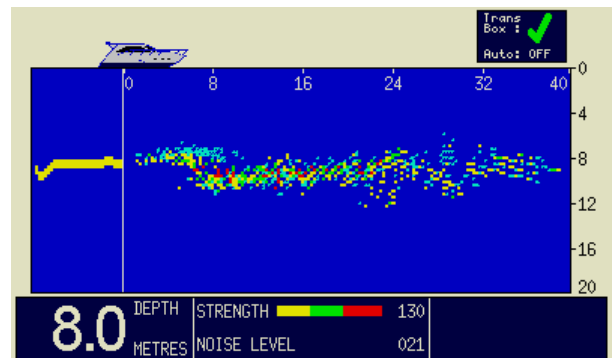
A fishing net is picked up over the wreck



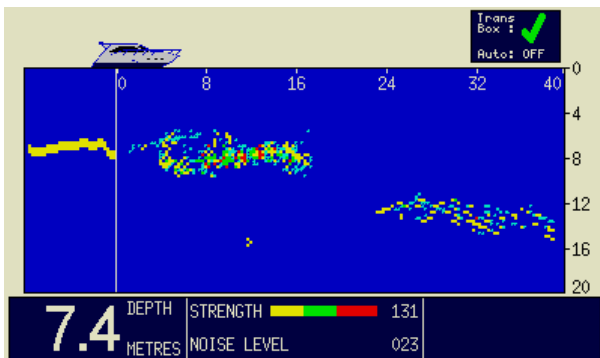
Wreck now starts to pass under the boat



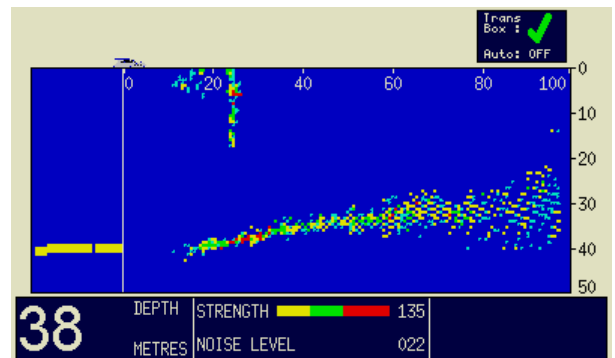
Caution! Rocky ledge approaching.



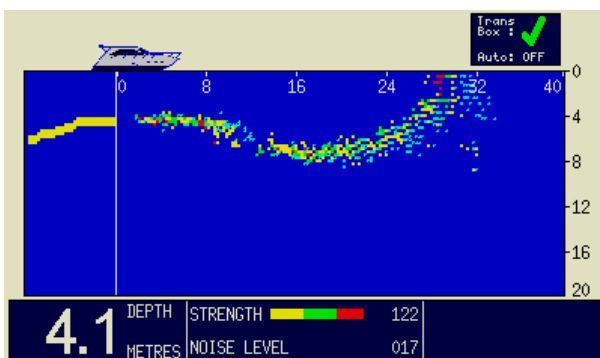
Another wreck detected on the ledge.



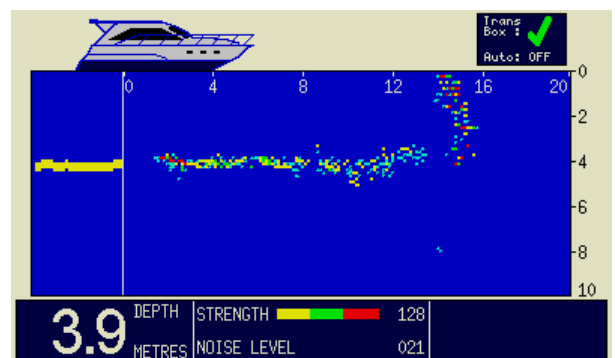
Wreck still showing and the sonar shadow caused by the ledge.



Buoy chain showing at 25m. Turbulence caused by fast moving tide also shows.



Now approaching a scoured slipway.



Quay wall at 15m on the short range.