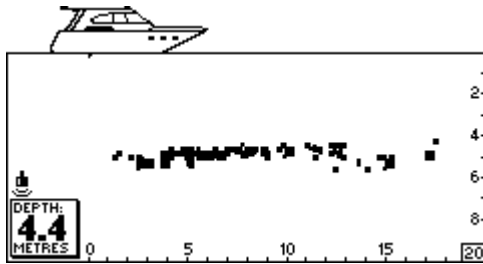


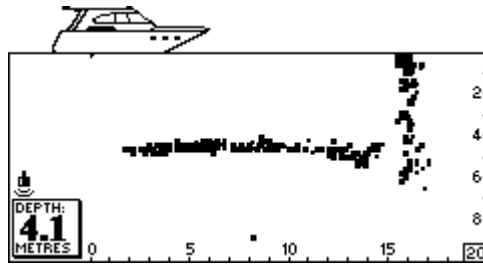
A Trip Around the UK Solent in the 'ECHOPLOT'
 (These are completely non-retouched screen shots from an FLS Gold)

1. Yarmouth Harbour



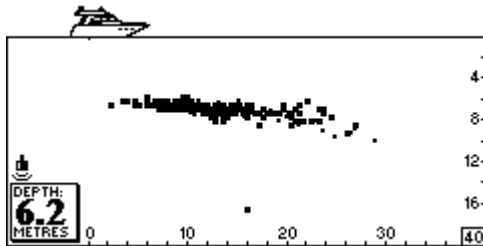
2. Approaching Yarmouth Quay

Note the excellent dredging right up to the quay wall!

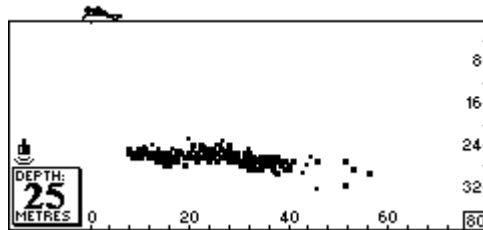


3. Out into the Solent

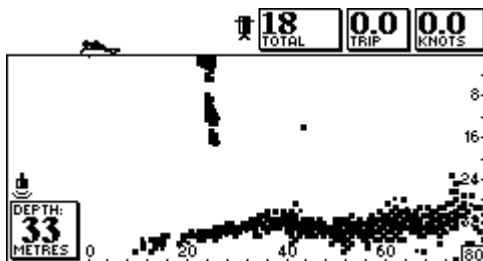
(a) Bottom shelving away gently.



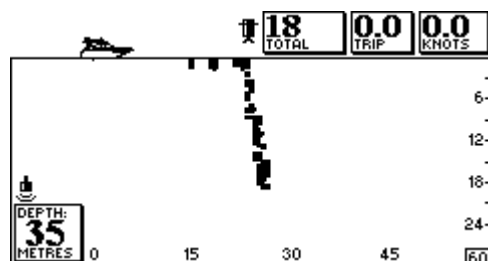
(b) Getting Deeper - 80m ahead range & 40m deep.



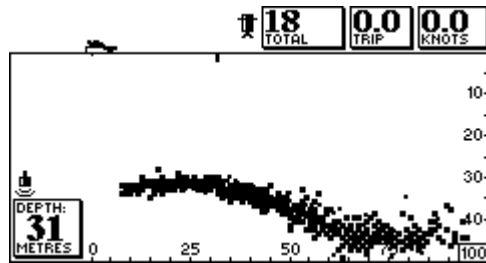
(c) Sconce Buoy Chain at 25m ahead. Buoy chain is about 9" thick.



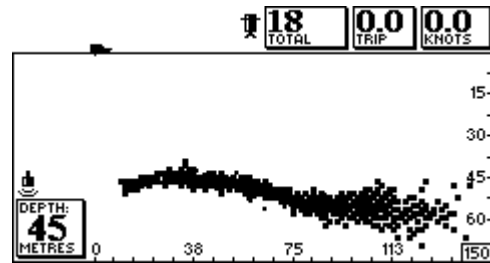
(d) Same buoy chain on shorter range.



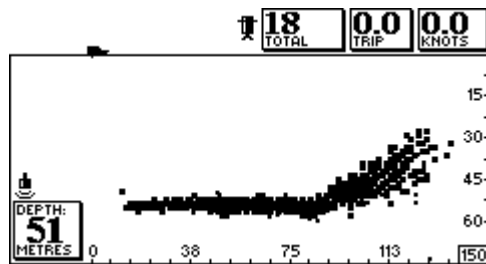
(e) Out into deeper water still.



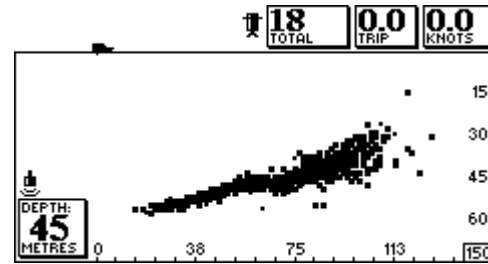
(f) Seabed levelling out at about 50m.



(g) Seabed starts to shelf up steeply.

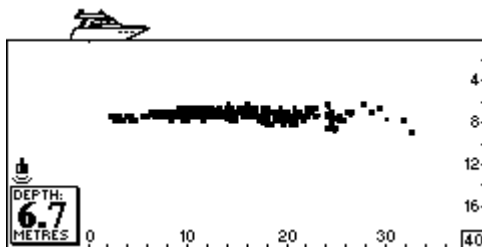


(h) More of a gentle slope.



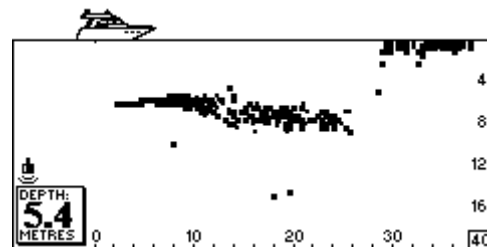
4. Into Lymington River

Excellent echo showing flat bottom to 5 times the depth.



5. Pontoons at Lymington

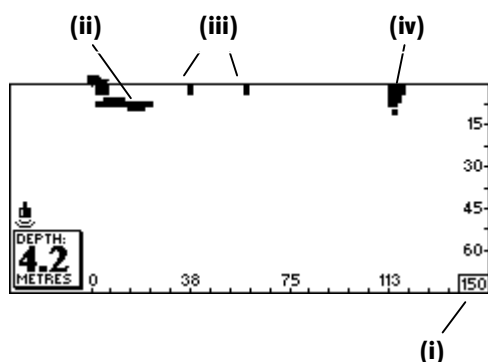
Surprisingly good echoes for polystyrene floats.



6. Approaching Lymington (Isle of Wight Ferry) Pier

A very interesting series of pictures...

(a)

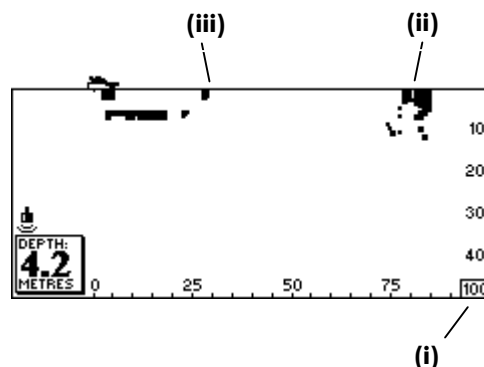


(i) Note the range is set on 150m. Not a range you would usually use in 4m of water. However, note the flat bottom to 30m ahead (ii).

(iii) Two boats (or their prop wash) that passed in front.

(iv) The quay wall clearly shown at 110m ahead.

(b)

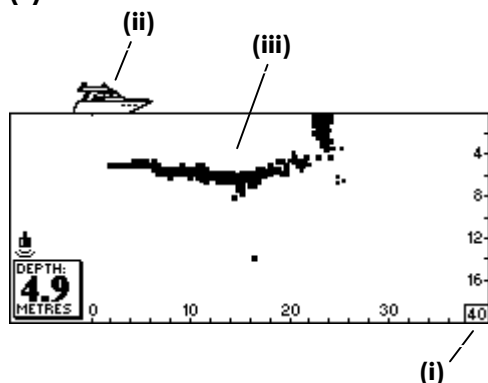


(i) Getting closer - 100m scale now.

(ii) Quay gives a very solid echo at 80m.

(iii) The Harbour Master's launch passed in front, wondering what we were doing!

(c)

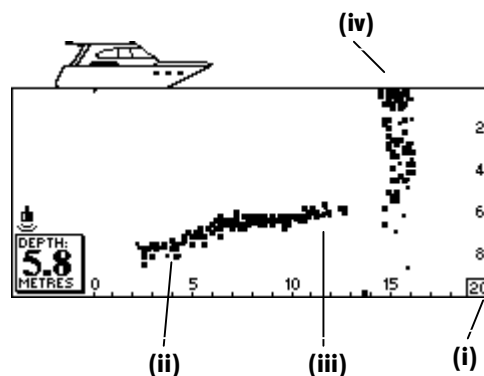


(i) 40m range chosen.

(ii) Note the boat icon (8m here) is increasing as the scale is decreased.

(iii) Scouring by ferry's Voith propellers left turning now shows.

(d)



(i) Now 20m range.

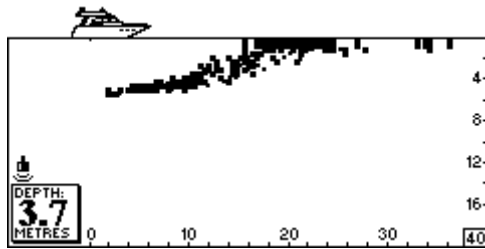
(ii) Excellent view now of scouring.

(iii) Good dredging!

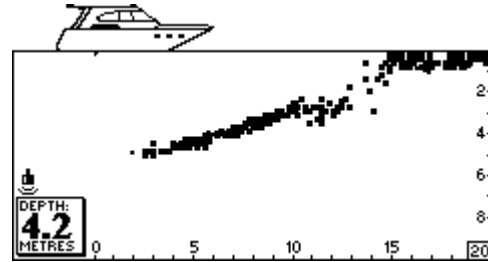
(iv) Look carefully at the wall. Its spaced wooden cladding in front of the steel shutter piling. Look closely and you can see both.

7. Approaching a Mud Bank at Lymington

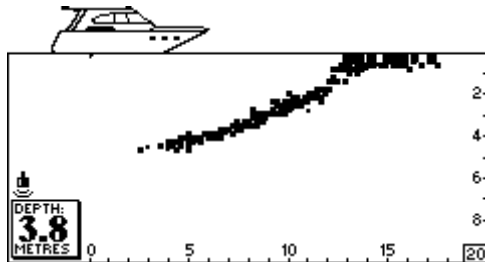
(a)



(b)



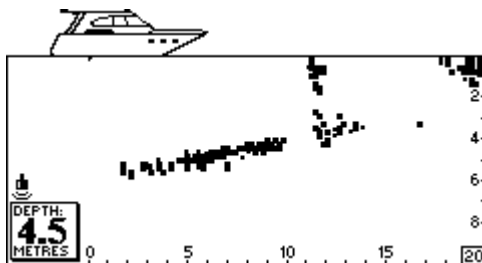
(c)



For disbelievers who say soft mud doesn't show on a sonar, this is the edge of the salt marshes adjacent to Lymington Yacht Haven.

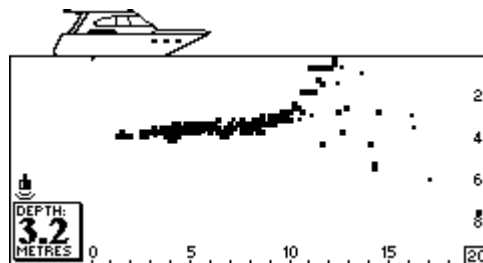
8. Wooden Pile at Lymington

This is the IALA East Mark - note scouring to the left of the pile.



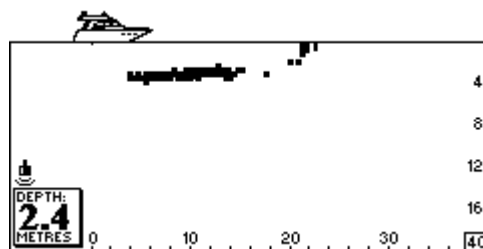
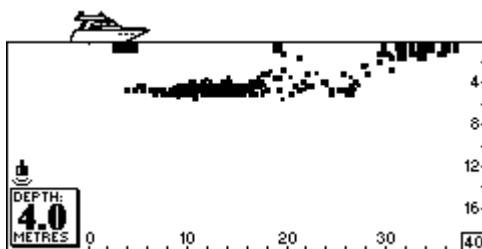
9. Gravel Bank at Keyhaven

The harder echo is gravel. The lighter is a silt/sand mix.



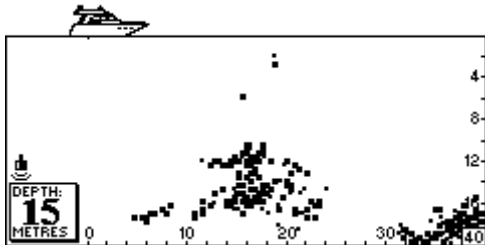
10. Approaching a Floating Barge at Keyhaven

This is the big steel fisherman's barge, anchored in Keyhaven river.

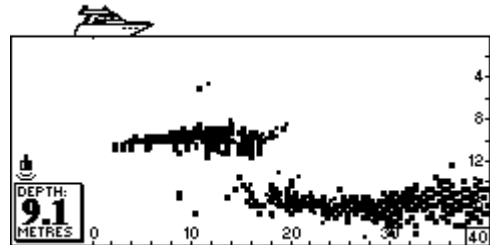


11. Now For a Bit of Wreck Hunting!

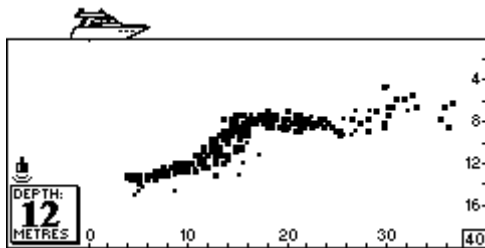
(a) Approaching the Margaret Smith off the Isle of Wight. The 100 ft sunken sand barge is just starting to appear on the display.



(b) The wreck is now clearly visible on the display.



(c) Approaching the S.S Varvassi, a Greek Steamer that sank after ploughing into the needles.



(d) Again, the wreck becomes clearer on the display as the boat passes over the top.

